



SDB 1106-40



The SDB Series is equipped with a patented U-4001 Drying Unit. A second dry unit is available as an option. It is engineered for medium to long-term constant low humidity storage of 1-2%RH.

The circulation of air in the cabinet is regulated by an internal fan.

All surfaces are ESD coated in conformity with current ESD 61340-5-1 standard.

The SDB-1106-41 is ideal for the moisture-proof and anti-oxidation storage of wide-ranging technologies and conforms with IPC/JEDEC J- STD 033C & IPC-1601



0 series display

Battery operated humidity measurement device (standard in cabinet).



Features

Hygrometer
Lockable doors
ESD safe design

Shelves
Dry Unit
Power supply

Hygrometer with alarm function, accuracy +/- 3%
6 doors locked with key
Norm (IEC 61340-5-1)
ESD metal painted body (10^6 Ohm/sq)
Dissipative glazing (inside and outside 10^8 Ohm/sq)
5 height adjustable ESD painted steel shelves
1 pc U-4001 Dry Unit
5 meter cable with IEC plug

Benefits

Maintenance
Dry Unit
Highly energy sufficient
Recovery time after door opening
Adjustable legs
IPC

The Drying Unit is maintenance free
Optional second unit available
Average power consumption 24 W/h
<40 min to below 1% with 1 dry unit (after 1 door opening)
For levelling out
According to IPC/JEDEC J- STD 033C & IPC-1601



Technical Data Cabinet

External dimensions:	(W x H x D) 1200 x 1675(1840) x 658 mm
Internal dimensions:	(W x H x D) 1190 x 1533 x 630 mm
Weight:	155 kg
Max weight on shelf:	50 kg
Max loading capacity:	300 kg
Body:	Steel, conductive coated $10^7 \Omega/\text{sq}$
Shelves (W x D):	5 pcs, 1157 x 490 mm, adjustable (ESD painted)
Volume:	1139 L
Voltage:	230 V AC (120 VAC optional)
Power consumption:	24 W/h
Protection class:	Hard grounded, Class 1
Humidity level cabinet:	Drying 1-2% RH *

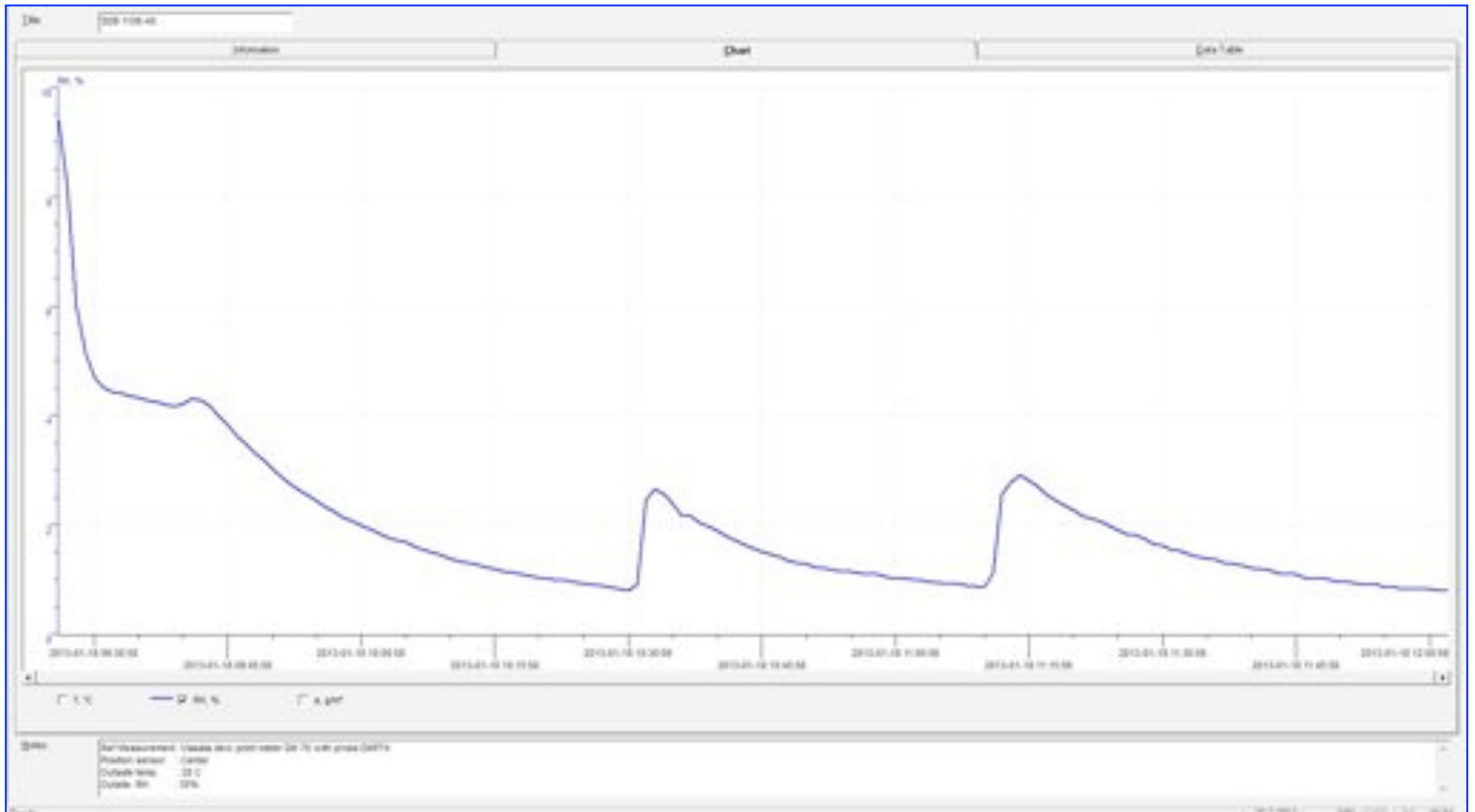
*(depending on amount of door openings)

Technical Data Dry Unit U-4001

Control:	Stand alone Dry Unit (no control function)
Voltage level:	230 V/50 Hz. (optional 120 V/60 Hz)
Power consumption:	24 W/h
Dimensions:	W x L X D = 260 mm x 380 mm x 100 mm
Weight:	8.1 kg.



Performance



Test condition:



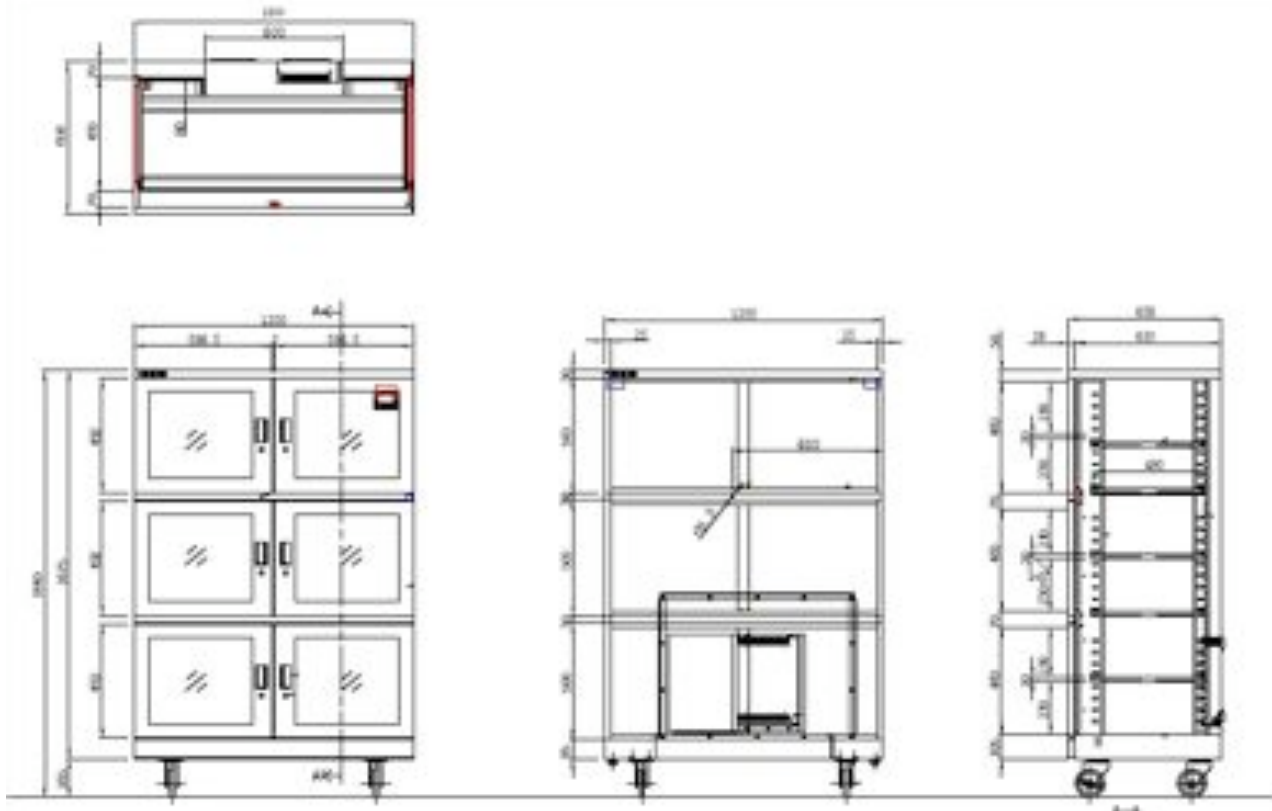
Instrument:
 Type of dew point sensor:
 Accuracy of dew point sensor:
 Location of sensor:
 Ambient conditions:
 Door openings:

Vaisala.
 Vaisala drycap 180M
 $\pm 0.2^{\circ}\text{C}$ at $+20^{\circ}\text{C}$ ($+68^{\circ}\text{F}$)
 In the direct surrounding of cabinet sensor
 Humidity $50 \pm 5\%$ RH, $25^{\circ} \pm 2^{\circ}\text{C}$, Pressure $994 \pm 20\text{hPa}$.
 2 door openings, 15 sec. (average RH 0.70%)



Technical Dimensions

SDB 1106-40



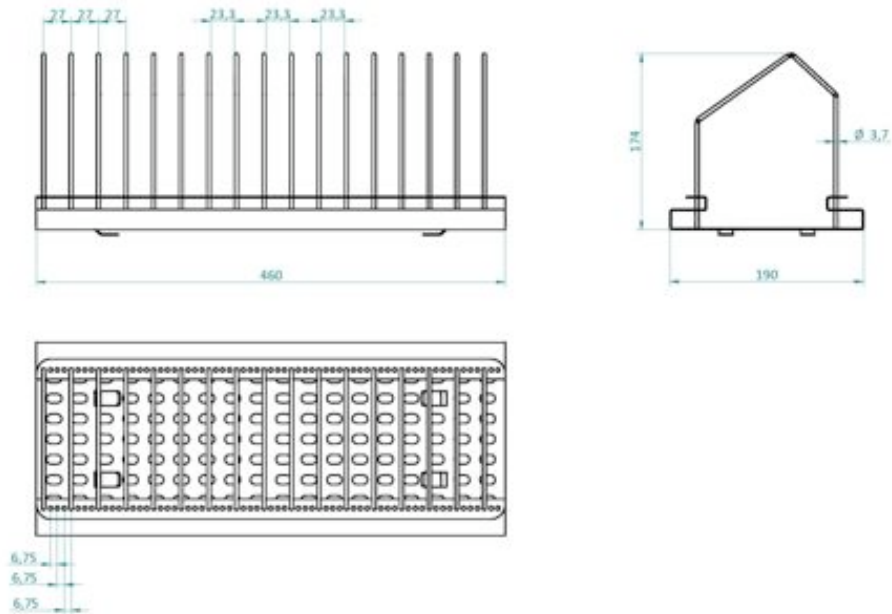
Dimensions in mm.

Number of shelves bottom section	2	3
Distance (in mm) between shelves if equally spaced in bottom section	160	80
Remaining space between top shelf and lower beam	150	155
Remaining space between bottom shelf and bottom cabinet	125	75
Number of shelves middle section	2	3
Distance (in mm) between shelves if equally spaced (if bottom shelf is mounted at lowest possible position in middle section)	230	130
Remaining space between top shelf and top beam	210	140
Remaining space between bottom shelf and lower beam	0	0
Number of shelves top section	2	3
Distance (in mm) between shelves if equally spaced (if bottom shelf is mounted at lowest possible position in top section)	230	130
Remaining space between top shelf and top beam	210	140
Remaining space between bottom shelf and upper beam	0	0
Shelves are adjustable every mm	30	30

Measurements can slightly deviate. For loading capacity of shelves see specification SDB 1106.



Technical Drawings SMD Reel Rack, item number 20014000



Options



SMD Reel Rack

460 mm length

Item number 20014000

SMD Reel supports – reel support for 20014000

Item number 20014200

Humidity calibrator Hygropalm 22

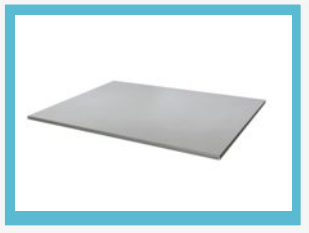
Precision measuring device for calibrating sensors

Set includes Hygroclip sensor, case and cable

Item number 20001019

Hygropalm only

Item number 20001016

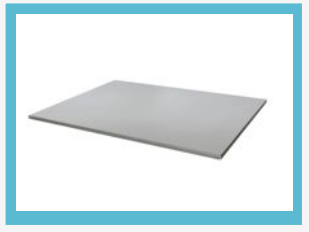


Shelf standard

For cabinets type 1106 and 1104.

Item number 20111408

Brackets 2 pcs, item number 20111709



Shelf

For cabinets with 2 drying units.

Item number 20111608

Brackets 2 pcs, item number 20111709



Rotronic datalogger set

Including HW4-E-V3 Software and Cable AC3006

Item number 47000580



Drying Unit U-4001

Item number 230V/50Hz 30021129

Item number 120V/60Hz 30021131

Item number: 93009412 / version 11-02

