



SD 702-21



The SD Series is equipped with a patented U 2000 Drying Unit. It is engineered for medium to long-term constant low humidity storage of 1% RH.

Humidity, temperature & alarm functions are shown and can be adjusted on a digital display.

The circulation of air in the cabinet is regulated by an internal fan.

All surfaces are ESD coated in conformity with current ESD 61340-5-1 standard.

The SD-702-21 is ideal for the moisture-proof and anti-oxidation storage of wide-ranging technologies and conforms with IPC/JEDEC J- STD 033C & IPC-1601.



Features

- **Accuracy of sensor RH% & T°C**
- **Lockable doors**
- **ESD safe design**
- **Shelves**
- **Door alarm**
- **Dry unit**
- **ESD bonding point**
- **21 series digital panel**
- **Pre mounted holes**
- **Power supply**
- +/- 3% RH, +/-0.3 °C
- 2 doors locked with key
- Norm (IEC 61340-5-1)
- ESD metal painted body (10⁶ Ohm/sq).
- Dissipative glazing (inside and outside 10⁸ Ohm/sq).
- 5 height adjustable chrome steel shelves
- Door is equipped with a switch which triggers the humidity or door alarm if the preset value is exceeded
- U 2000 Dry Unit.
- ESD wristband can be connected with the cabinet
- Very convenient settings of RH%, temperature, alarm and calibration functions.
- For nitrogen unit & heater
- 5 meter cable with IEC plug

Benefits

- **Maintenance**
- **Highly energy sufficient**
- **Option availability**
- **Recovery time after door opening**
- **Adjustable legs**
- **Datalogging**
- **Temperature**
- **IPC**
- The drying unit is maintenance free
- Average power consumption 35 W/h
- N2 Auto Flow, heating, SMD reel racks, etc.
- <30 min to below 1%. (after 1 door opening)
- For levelling out
- Through network with software
- Maximum 40 °C (optional)
- According to IPC/JEDEC J- STD 033C & IPC-1601



Technical Data Cabinet

- External dimensions: (W x H x D) 620 x 1675 (1840) x 768 mm
- Internal dimensions: (W x H x D) 610 x 1533 x 735 mm
- Weight: 152 kg
- Max. weight on shelf: 100 kg
- Max. loading capacity: 300 kg
- Body: Steel, conductive coated $10^7 \Omega/\text{sq}$
- Shelves (W x D): 5 pcs, 577 x 580 mm adjustable
- Volume: 680 L
- Voltage: 230 V AC (120 V AC optional)
- Power consumption: 35 W/h
- Protection class: Hard grounded, Class 1
- Humidity level cabinet: Drying 1% RH *

*(depending on frequency of door openings)

Technical Data U 2000 Dry Unit

- Control: Adjustable with control panel 21-series
- Voltage level: 230 V/50 Hz. (optional 120 V/60 Hz)
- Power consumption: 35 W/h
- Dimensions: W x L X D = 260 mm x 380 mm x 100 mm
- Weight: 8.1 kg.

Technical Data 21 Display

Settings:

- Nominal humidity value
- Nominal humidity value alarm (light)
- Time delay humidity alarm
- Nominal temperature value
- Door alarm buzzer
- Offset possibilities

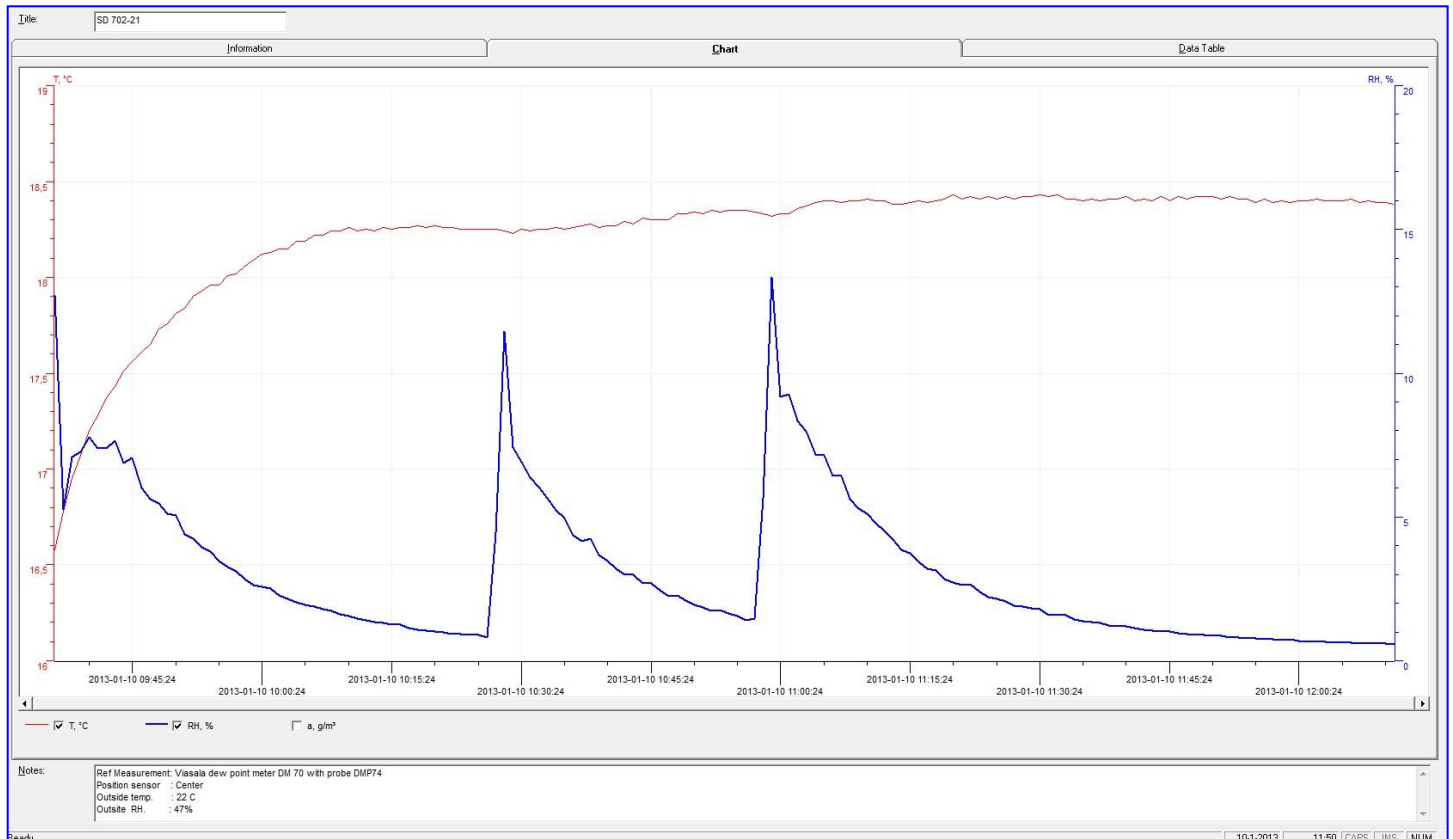


Technical Data N² (Auto) Flow

- Power supply: 230 V AC (110 V AC optional)
- N² Connection: 8 mm hose connection
- N² Pressure: 1 – 6 bar
- N² Standby- amount: 0 – 25 L/min
- N² Purge: 0 – 25 L/min



Performance



Test conditions



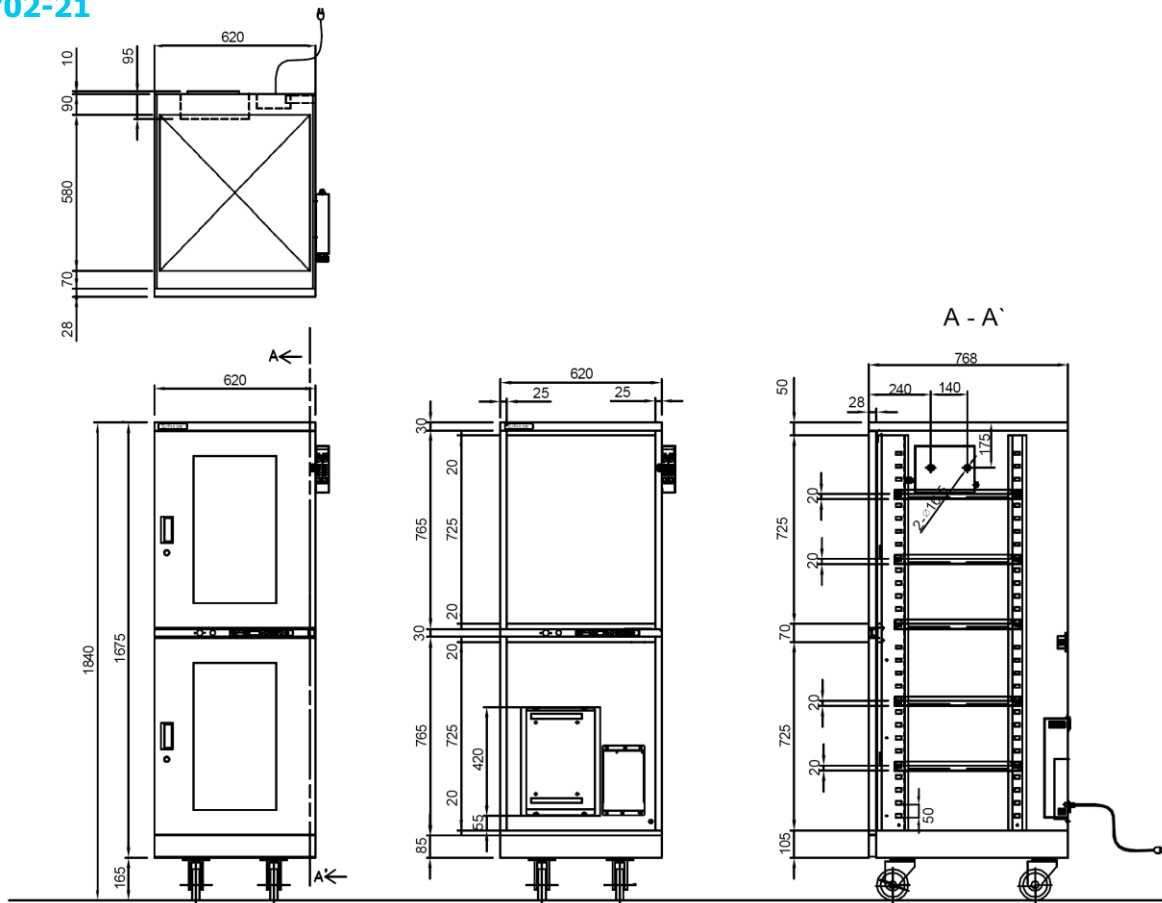
Instrument:
 Type of dew point sensor:
 Accuracy of dew point sensor:
 Location of sensor:
 Ambient conditions:
 Door openings:

Vaisala.
 Vaisala drycap 180M
 $\pm 0.2^{\circ} \text{C}$ at $+ 20^{\circ} \text{C}$ ($+ 68^{\circ} \text{F}$)
 In the direct surrounding of cabinet sensor
 Humidity $50 \pm 5\% \text{ RH}$, $25^{\circ} \pm 2^{\circ} \text{C}$, Pressure $994 \pm 20 \text{hPa}$.
 2 door openings, 15 sec. (average RH 0.70%)



Technical Drawings

SD 702-21



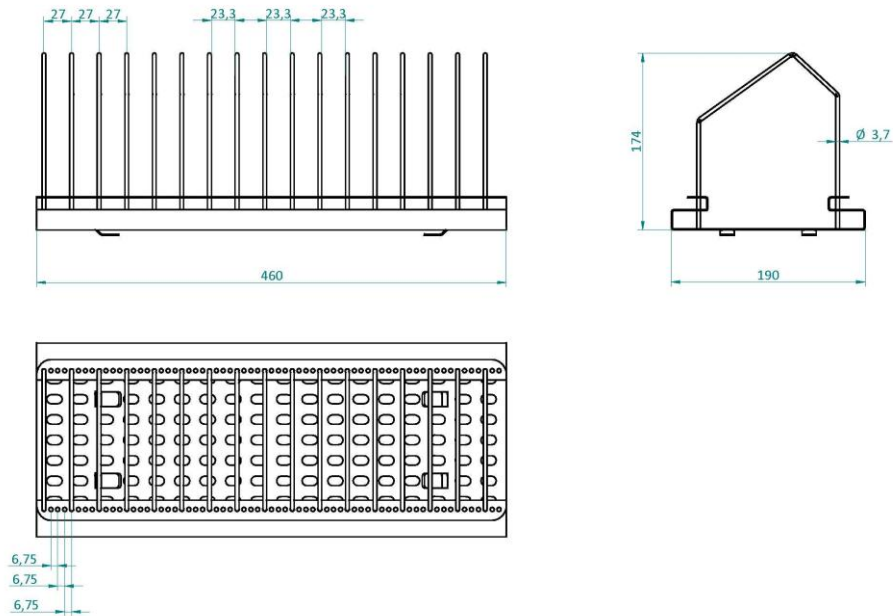
Dimensions in mm.

Number of shelves bottom section	2	3	4	5
Distance (in mm) between shelves if equally spaced in bottom section	350	230	175	125
Remaining space between top shelf and middle beam	370	225	125	120
Remaining space between bottom shelf and bottom cabinet	330	230	180	125
Loading capacity shelves m ² (575 x 580 mm)	0,67	1	1,33	1,67
Number of shelves top section	2	3	4	5
Distance (in mm) between shelves if equally spaced (if bottom shelf is mounted at lowest possible position in top section)	350	230	175	125
Remaining space between top shelf and top beam	370	230	125	125
Remaining space between bottom shelf and middle beam	330	230	180	130
Loading capacity shelves m ² (575 x 580 mm)	0,67	1	1,33	1,67
Shelves are adjustable every (mm)	50	50	50	50

Measurements can slightly deviate.



Technical Drawings



Dimensions of the SMD Reel Rack, item number 20014000



Options



N2 Auto Flow System

The Auto Flow System is developed for use in combination with a Totech drying cabinet. The device is used for the quick removal of moisture in the cabinet after the doors have been opened. The drying process is realized by using nitrogen (N²), which is added automatically after the doors have been closed (by means of adjustable timer function)

Item number 22613001



N2 Flow System 10-100

The N2 Flow System is developed for use in combination with a Totech drying cabinet. The device is used for the quick removal of moisture in the cabinet. The drying process is realized by using nitrogen (N²). Adjustable 10 – 100 L/min

Item number 20010020



SMD Reel Rack

460 mm length, and mountable on shelf.

Item number 20014000

SMD Reel supports

reel support for 2001400

Item number 20014200



Humidity calibrator Hygropalm 22

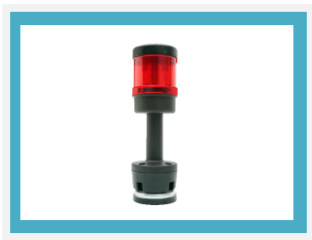
Precision measuring device for calibrating sensors

Set includes Hygroclip sensor, case and cable

Item number 20001019

Hygropalm only

Item number 20001016



Humidity alarm light - Red or Orange

Item number 20016033



Options

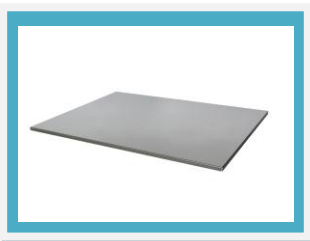


Shelf

Chrome steel shelf,

Item number 20070200

Brackets 2 pcs, item number 20111709



Shelf

Chrome steel shelf, for dry unit

Item number 20070201

Brackets 2 pcs, item number 20111709



Set spare parts SD cabinet

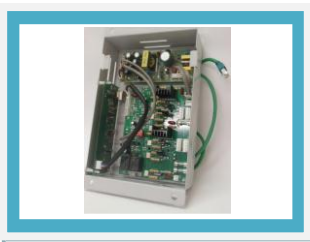
Set includes the main spare parts for the SD cabinet: U-2000 Dry Unit, main PCB and power supply.

Item number 30006099

Exchange set spare parts SD cabinet

Same set as above, but as exchange.

Item number 30006096



SD network PCB incl. software

Item number 20024220



Adjustable legs

4 height adjustable legs (63 – 80 mm).

Item number 20010010

version 21-01

