

# small parts storage cabinets



Cabinets, which combine a stylish industrial design with practical accessories to provide flexible and efficient ESD protected small parts storage. They can be wall hung or mounted on space-saving turntables or stood on the worktop. Available in two sizes with heights 290 and 550 mm.

The design combines the use of a strong, semiconductive polypropylene frame and galvanised steel shelves in such a way that small drawers of semiconductive polystyrene sit securely within the framework. Supplied with labels and connector for earth lead. Details of the small parts drawers can be found on page 30 Accessories: cross dividers of semiconductive polystyrene.



Code	291-4ESD	294-4ESD	551-4ESD	554-4ESD
Drawer (Quantity x Type)	24 x L-61-4ESD	12 x L-64-4ESD	48 x L-61-4ESD	24 x L-64-4ESD
Drawer dimensions D x W x H:	170 x 69 x 40 mm	170 x 92 x 62 mm	170 x 69 x 40 mm	170 x 92 x 62 mm
Framedimensions D x W x H:	180 x 310 x 290 mm	180 x 310 x 290 mm	180 x 310 x 550 mm	180 x 310 x 550 mm
Cross dividers (ordered separately) (Quantity/drawer)	V-1-4ESD (5 pcs)	V-4-4ESD (5 pcs)	V-1-4ESD (5 pcs)	V-4-4ESD (5 pcs)

## table stands

### Bench top spacemiser PTP-5 ESD

This unit consists of a combination ball bearing base/baseplate and will hold 2 small parts storage cabinets 291/294 ESD or 551/554 ESD which are ordered separately. Earthing cable is included. Load capacity 50 kg.

Complete assembly's dimensions D x W x H:  
310 x 360 x 300 mm (291 ESD/294 ESD)  
310 x 360 x 560 mm (551 ESD/554 ESD)



# spacemiser



Perfect for the location, storage and identification of thousands of small components.

## Spacemiser 12-550 ESD

- this unit will hold 12 small parts storage cabinets
- 551/554 ESD in three layers
- each layer contains four cabinets which are ordered separately
- includes ball bearing base, dividing trays and a baseplate
- load capacity 400 kg
- earth via protective 1 megohm resistor
- complete assembly's dimensions  
D x W x H: 500 x 500 x 1730 mm

# cabinet stands



## Single stand BS-550L ESD

- this assembly holds 4 small parts storage cabinets 551/ 554 ESD which are ordered separately
- free standing frame of semiconductive epoxy powder coated steel in light grey RAL 7035
- 3 aluminium rails are included
- load capacity 50 kg.
- overall dims D x W x H: 420 x 760 x 1585 mm

## Double stand BS-550T ESD

- this assembly holds 8 small parts storage cabinets 551/ 554 ESD which are ordered separately
- free standing frame of semiconductive epoxy powder coated steel in light grey RAL 7035
- 3 aluminium rails are included
- load capacity 100 kg.
- overall dims D x W x H: 600 x 760 x 1585 mm

## Trolley BT-550 ESD

- this assembly holds 8 small parts storage cabinets 551/ 554 ESD which are ordered separately
- construction as double stand
- with bottom shelf of 12 mm ESD-laminate
- four castors Ø 100 mm which two are conductive and two braked
- load capacity 150 kg
- overall dims D x W x H: 600 x 760 x 1700 mm

# storage cabinets



Storage cabinets are stackable vertically and may be wall hung or mounted on turntable assemblies. Available in two sizes with depths 300 and 400 mm.

The cabinet has a strong, steel frame, galvanised steel shelves, semiconductive bins and labels with protective shields (not conductive). Supplied with connector for earth lead. Details of the drawers can be found on page 30. Accessories: cross dividers of semiconductive polypropylene.



Code	0830 ESD	1630 ESD	0840 ESD	1640 ESD
Drawer (Quantity x Type)	8 x 3020-4ESD	16 x 3010-4ESD	8 x 4020-4ESD	16 x 4010-4ESD
Drawer dimensions D x W x H:	300 x 186 x 82 mm	300 x 92 x 82 mm	400 x 186 x 82 mm	400 x 92 x 82 mm
Framedimensions D x W x H:	300 x 400 x 395 mm	300 x 400 x 395 mm	400 x 400 x 395 mm	400 x 400 x 395 mm
Cross dividers (ordered separately) (Quantity/drawer)	D-20-4ESD (4 pcs)	D-10-4ESD (4 pcs)	D-20-4ESD (6 pcs)	D-10-4ESD (6 pcs)

## turntable assemblies

Compact storage systems for use in maintenance, production and storage areas. Space saving practical turntable assemblies are ideal for the storage and easy identification of thousands of components. Such assemblies offer storage for up to 1.792 different items on a floor area of only 0,64 sqm. When wall space is limited the turntable assembly, strategically placed, is a huge space saver. Load capacity 800 kg. Easy assembly without tools

### 16-300 ESD

- this unit holds 16 Bin Cabinets 0830/1630 ESD which are ordered separately
- includes a ball bearing base and dividing trays
- load capacity 800 kg
- earth via protective 1 megohm resistor
- complete assembly's dims D x W x H: 700 x 700 x 1680 mm

### 16-400 ESD

- this unit holds 16 Bin Cabinets 0840/1640 ESD which are ordered separately
- includes a ball bearing base and dividing trays
- load capacity 800 kg
- earth via protective 1 megohm resistor
- complete assembly's dims D x W x H: 800 x 800 x 1680 mm



# high density cabinets



4840 ESD

2440 ESD

ESD protected high density cabinets for the electronics industry – providing static or mobile storage. Robust construction. Load capacity 240 kg. Designed as freestanding units. There is a choice of 2 different bin combinations. Each cabinet includes a grey semiconductive epoxy enamelled steel frame (RAL 7035), galvanised steel shelves, semiconductive bins and labels with protective shields (not conductive). Adjustable feet are provided for fine levelling. Load capacity for the cabinet is 240 kg/ 30 kg per shelf. Dividers are available separately. Details of the storage bins can be found on page 30. Accessories: cross dividers and castors.

## 2440 ESD

- frame size D x W x H: 410 x 605 x 870 mm
- with 24 drawers, type: 4020-4ESD
- accessories: cross divider D-20-4ESD

## 4840 ESD

- frame size D x W x H: 410 x 605 x 870 mm
- with 48 drawers, type: 4010-4ESD
- accessories: cross divider D-10-4ESD

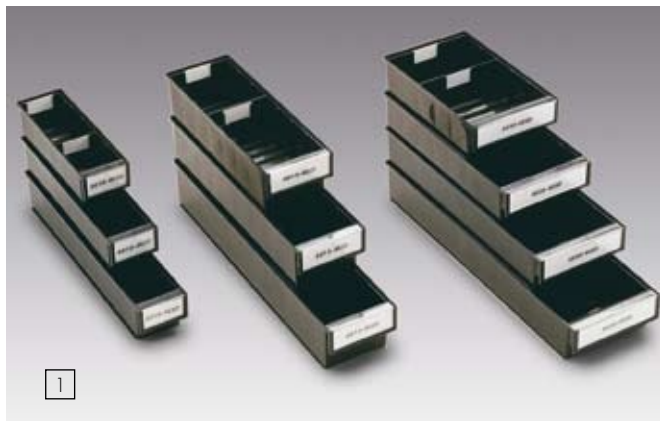
## Castor set PS-LH ESD

Swivel castors Ø 100 mm of which two are conductive and two braked. Load capacity of cabinet with castors is 150 kg.

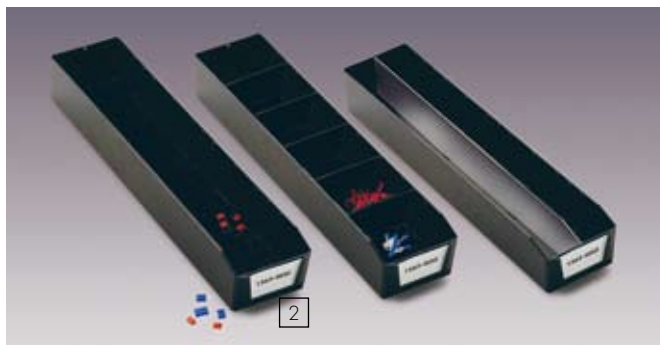


2440 ESD +  
PS-LH ESD

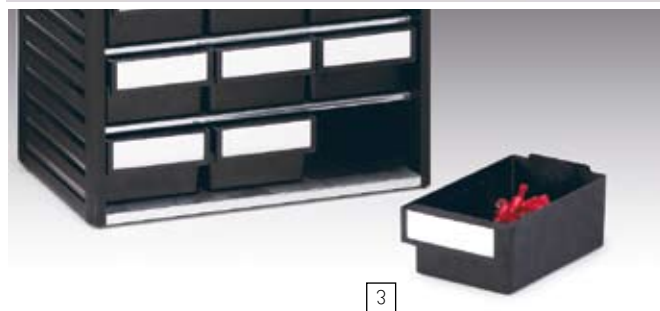
# conductive bins ESD



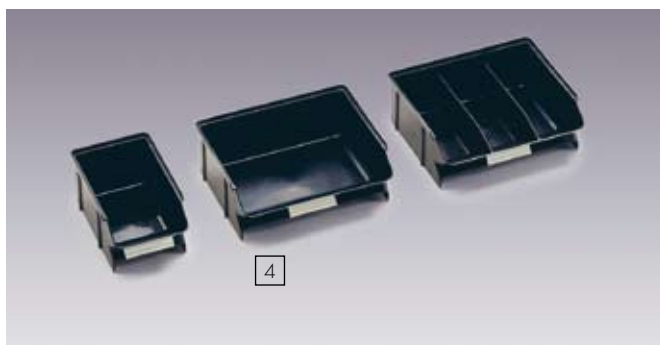
1



2



3



4



5

## 1. Shelf bins

Shelf bins with corrugated base are suitable for all standard shelves with a depth 300, 400, 500 and 600 mm. The corrugated base design eases the picking of the smallest of items. These bins stack securely, as do bins of different depths when the width is the same. Material: semiconductive polypropylene. Full width label with protective shield is included with the bin. Label holders simply lift off when necessary. Shield is not conductive. Accessories: cross dividers.

Code	Outer dims D x W x H mm	Dividers (ordered separately)
3010-4ESD	300 x 92 x 82	D-10-4ESD
3020-4ESD	300 x 186 x 82	D-20-4ESD
4010-4ESD	400 x 92 x 82	D-10-4ESD
4015-4ESD	400 x 132 x 100	D-15-4ESD
4020-4ESD	400 x 186 x 82	D-20-4ESD
5010-4ESD	500 x 92 x 82	D-10-4ESD
5015-4ESD	500 x 132 x 100	D-15-4ESD
5020-4ESD	500 x 186 x 82	D-20-4ESD
6015-4ESD	600 x 132 x 100	D-15-4ESD
6020-4ESD	600 x 186 x 82	D-20-4ESD

## 2. Storage bin with smooth base

Storage bins, with smooth sides and bases, are effective space savers. Bin 1562 is specifically designed for storing IC dispensing tubes. Material: semiconductive polystyrene. Label with protective shield is included with the bin. Shields are not conductive. Accessories: cross or lengthway dividers.

Code	Outer dims D x W x H mm	Dividers (ordered separately)
1562-4ESD	625 x 140 x 90	V-15-4ESD (cross) V-60 (lengthway, aluminium)

## 3. Small parts drawers

Available in two sizes. Accessories: cross divider.

Code	Outer dims D x W x H mm	Dividers (ordered separately)
L-61-4ESD	170 x 69 x 40	V-1-4ESD
L-64-4ESD	170 x 92 x 62	V-4-4ESD

## 4. Picking bins

Picking bins are intended for repeated and rapid picking. Material: Semiconductive polystyrene (PS).

Code	Outer dims D x W x H mm	Dividers
30-1L-4ESD	160 x 99 x 70	
30-2L-4ESD	160 x 198 x 70	
30-23L-4ESD	160 x 198 x 70	2 fixed length dividers

## 5. Large stacking bins

Material: semiconductive polypropylene. Made only to order. Please ask for details.

Code	Outer dims D x W x H mm
1949-4ESD*	490 x 185 x 250
3149-4ESD*	490 x 310 x 250

## Semiconductive polypropylene = PP

- surface resistivity  $10^3 \dots 10^6$  ohm
- volume resistivity  $10^3 \dots 10^6$  ohm
- temperature tolerance  $-20 \dots +70^\circ\text{C}$

## Semiconductive polystyrene = PS

- surface resistivity  $10^3 \dots 10^6$  ohm
- volume resistivity  $10^3 \dots 10^6$  ohm
- temperature tolerance  $-40 \dots +65^\circ\text{C}$

\*) Made only to order. Please ask for details.

# conductive bins ESD



## 6. Stacking bins

For use on louvred panel and rail systems. Their open front design gives good access. Corrugated base eases the picking of the smallest of items. Material: Semiconductive polypropylene (PP). Accessories: Cross dividers are of semiconductive epoxy powder coated steel. Label with shield, shields are not conductive.

Code	Outer dims D x W x H mm	Dividers (ordered separately)	Labels (ordered separately)
1015-4ESD	165 x 105 x 75	—	E-10
1520-4ESD	192 x 149 x 105	—	E-15
1525-4ESD	250 x 149 x 130	V-14	E-15
1930-4ESD	300 x 186 x 156	V-19	E-20
1940-4ESD	400 x 186 x 156	V-19	E-20
1950-4ESD*	510 x 186 x 182	V-195	E-20
3040-4ESD*	400 x 310 x 182	V-30	E-20
3050-4ESD*	500 x 310 x 182	V-30	E-20



## 7. Storage boxes

Straight sided storage boxes of 18 and 36 litre capacity are used for internal and external transport systems. These have integral handles and stack securely together. Material: Semiconductive polystyrene (PS).

Code	Outer dims D x W x H mm
10-18L-4ESD	535 x 323 x 150
10-36L-4ESD	508 x 323 x 280

\*) Made only to order. Please ask for details.

# stacking bin stands, trolley



## Single stand BS-160LA ESD

- free standing frame of semiconductive epoxy powder coated steel in light grey RAL 7035
- 8 adjustable, double sided bin rails, length 740 mm
- stacking bins are ordered separately
- load capacity 120 kg
- size D x W x H: 420 x 820 x 1585 mm

One rail will hold either  
7 pcs 1015-4ESD  
5 pcs 1520-4ESD  
5 pcs 1525-4ESD  
4 pcs 1930-4ESD.



## Double stand BS-160TA ESD

- free standing frame of semiconductive epoxy powder coated steel in light grey RAL 7035
- 8 adjustable bin rails, length 740 mm.
- Stacking bins are ordered separately.
- Load capacity 240 kg
- size D x W x H: 600 x 820 x 1585 mm

One rail will hold  
14 pcs 1015-4ESD  
10 pcs 1520-4ESD  
10 pcs 1525-4ESD  
8 pcs 1930-4ESD.



## Trolley BT-170A ESD

- as double stand
- bottom shelf of 12 mm ESD-laminate
- 4 castors Ø 100 mm which two are conductive and two braked
- load capacities: trolley 150 kg
- size D x W x H: 600 x 820 x 1700 mm

One rail will hold  
14 pcs 1015-4ESD  
10 pcs 1520-4ESD  
10 pcs 1525-4ESD  
8 pcs 1930-4ESD.