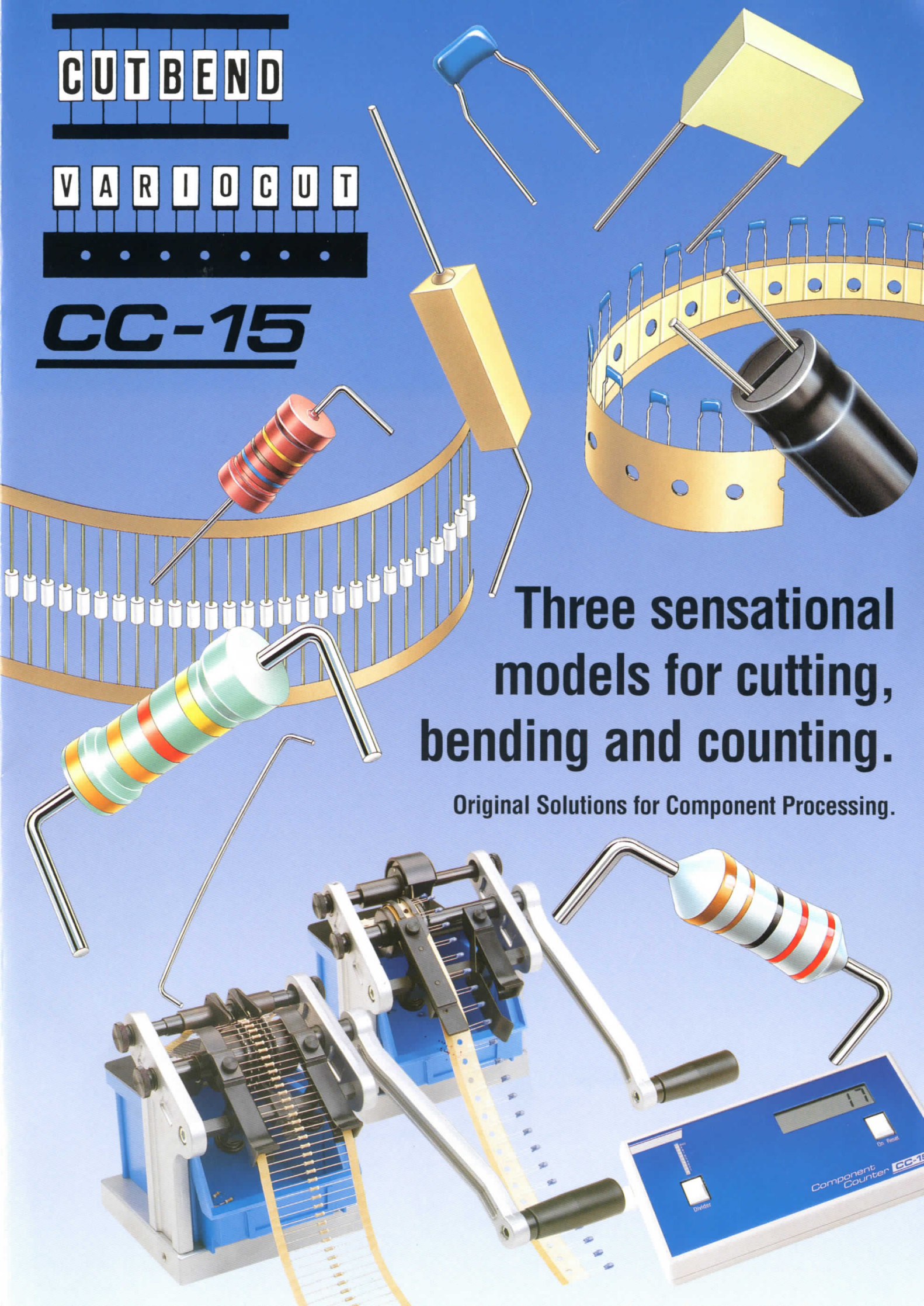


CUTBEND

VARIOCUT

CC-15



**Three sensational
models for cutting,
bending and counting.**

Original Solutions for Component Processing.

Component Counter **CC-15**

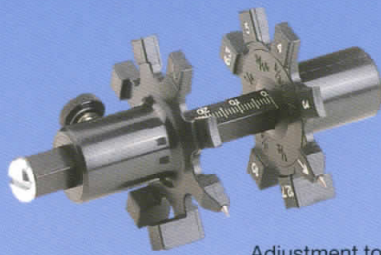
CUTBEND

The Original

Component Lead Cutting and Bending Machine

More than 35 000 samples of the proven CUTBEND machine for cutting and bending the axial leads of taped components are operated worldwide. Thanks to its high performance (up to 40 000 components per hour) and its easy operation, this machine stands the test day after day. The machine amortizes in a short time thanks to its exceptional cost-effectiveness. The CUTBEND can easily be adjusted and readjusted to different components and dimensions. The easy-to-replace cutting and bending wheels allow very thin (0.5 mm) or very thick (1.2 mm) leads to be processed. The well-designed mechanism

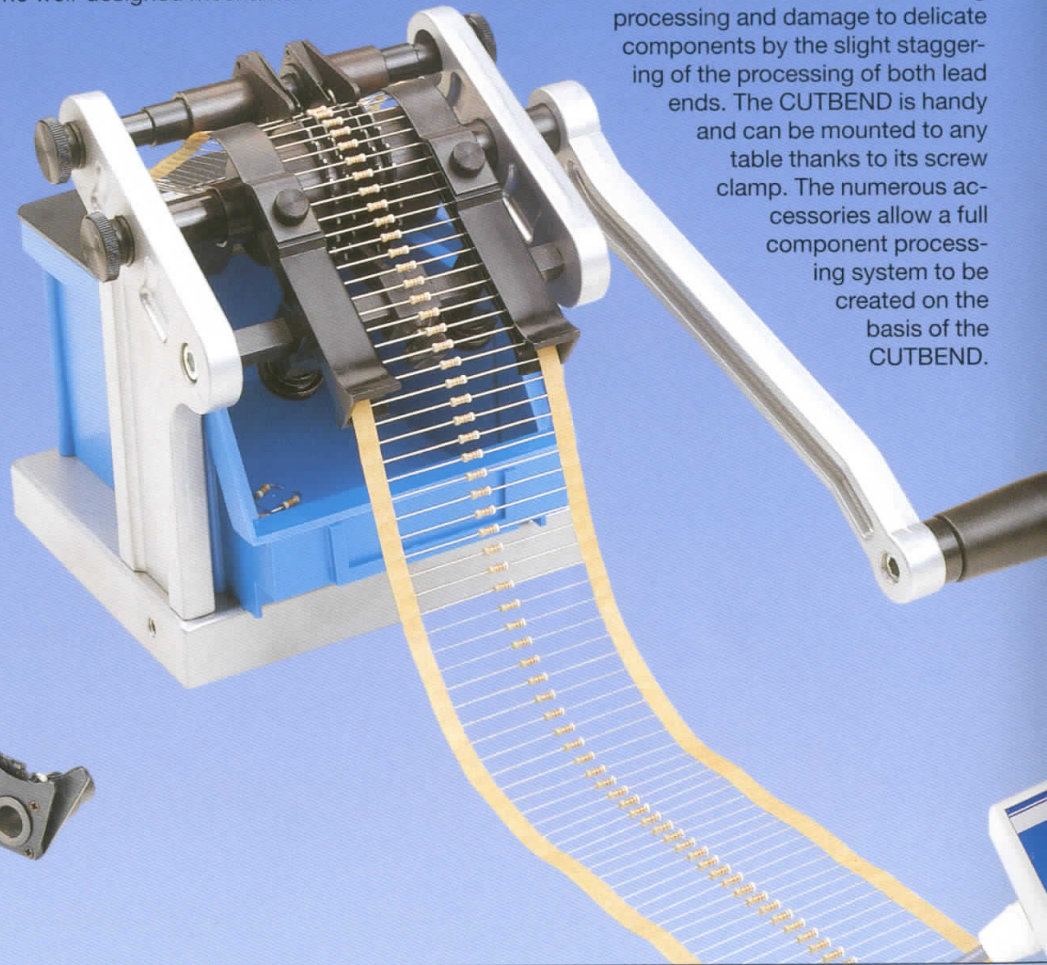
avoids axial tensile stress during processing and damage to delicate components by the slight staggering of the processing of both lead ends. The CUTBEND is handy and can be mounted to any table thanks to its screw clamp. The numerous accessories allow a full component processing system to be created on the basis of the CUTBEND.



Adjustment tool delivered as standard equipment, for transferring the distances between the holes of the board and for quick and accurate setting of the CUTBEND.



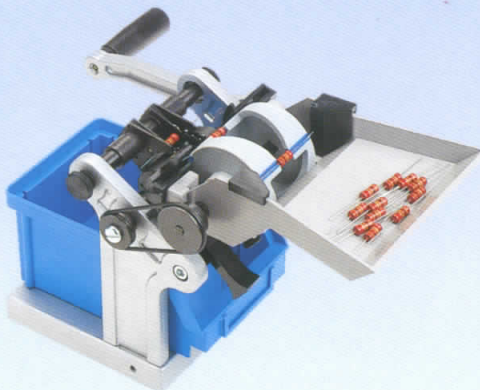
Easy-to-exchange cutting and bending tools.



Accessories

CB-3000 Loose Component Feeder

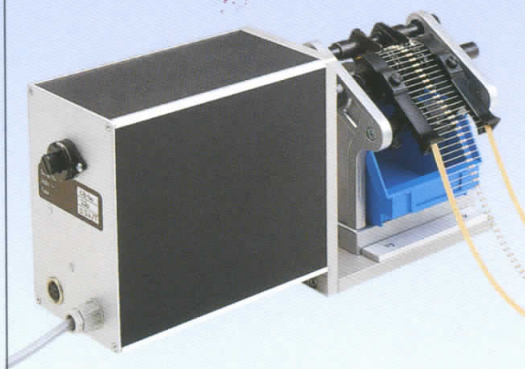
This CUTBEND add-on unit allows loose, individual, components to be processed. Two adjustable feed rollers separate and center the components and feed them into the CUTBEND. When using perfect components, a maximum feeding performance of 3000 components per hour can be attained.



CB-100 Drive Unit

This electric motor unit allows the CUTBEND and the VARIOCUT to be converted into automatic systems.

discontinued



CB-109 Dispenser Reel

This unit facilitates the feeding of taped components to the CUTBEND and the VARIOCUT. It can easily be mounted to these machines.



CC-15

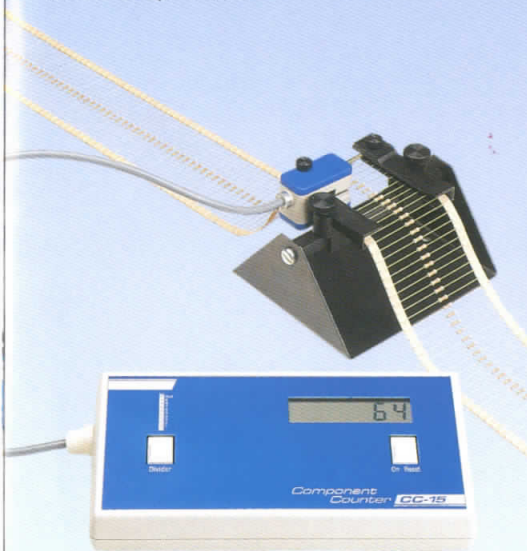
The Universal

Component Counter

The universally applicable CC-15 electronic counter ideally completes the component processing machines. It rationalizes work in the fields of inspection of incoming goods, work preparation and stock taking. The CC-15 can count from 0 to 999999 in both directions. Thanks to the adjustability of the divisor it can determine the real number of components. It is therefore suitable for counting single- and double-tape components as well as for counting SMDs. In addition, an optional interface allows the number of components to be printed out by a label printer. The CC-15 can be directly mounted to the CUTBEND and the VARIOCUT.



The CC-15 is delivered with counting head, tape feeder and mains adapter unit.



V A R I O C U T

The proven one

Radial component lead cutting machine

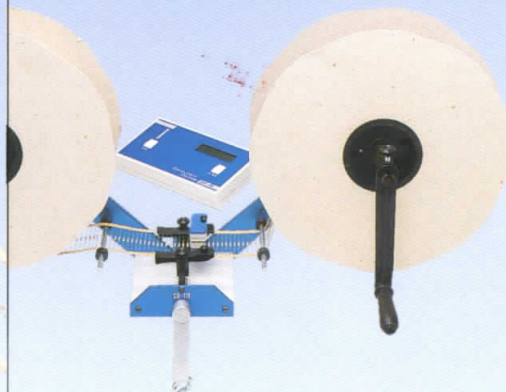
The proven VARIOCUT machine cuts the radial leads of taped components of all kinds to the desired length, eliminating the need to cut the component leads after soldering. The VARIOCUT's operating principle is based on the efficient CUTBEND principle. The VARIOCUT is characterized by its easy handling, high performance and favorable price.

It is handy and can be mounted to any table using its screw clamp. The machine can be combined with the practical accessories of the CUTBEND.



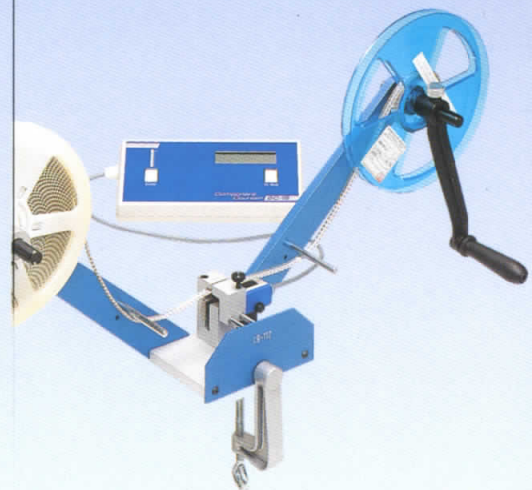
CB-111 Rewinding Unit

This component tape rewinding unit serves – above all in combination with the CC-15 counter – for placing components in readiness and for accurate stock taking.



CB-112 Rewinding Unit

This unit for rewinding SMD reels serves – above all in combination with the CC-15 counter – for placing components in readiness and for accurate stock taking.



Technical Specifications

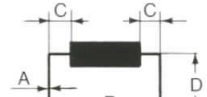
CUT BEND

Dimensions (without crank): L 175/W 145/H 160 mm Weight (complete): 1,9 kg

Crank length: 160 mm

Output: up to 40 000 components per hour

Standard equipment: cutting and bending on both sides (VB head)



Processing possibilities:

VB head type	A	B	C	D
● 0,5 mm	0,3–0,5 mm	4,7–40 mm	min. 1,0 mm	2,6–15 mm
□ 0,8 mm	0,5–0,8 mm	6,0–40 mm	min. 1,3 mm	3,6–15 mm
● 1,0 mm	0,9–1,0 mm	6,0–40 mm	min. 1,8 mm	3,6–15 mm
● 1,2 mm	1,1–1,2 mm	6,0–40 mm	min. 2,0 mm	3,6–15 mm

● FG head type

E
–
3,1–20 mm
–
–

Cutting and bending on one side (½ VB head)



Cutting on the other side only (½ FG head = BG head)



Cutting on both sides only = FG head



Maximum component diameter for all head types: 14 mm

V A R I O C U T

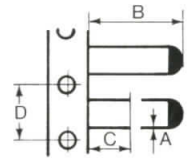
Dimensions (without crank): L 175/W 145/H 160 mm Weight (complete): 1,9 kg

Crank length: 160 mm

Output: up to 40 000 components per hour

Processing dimensions:

Type of head	A	B	C	D
□ 12,7	0,5–0,8 mm	max. 35 mm	1,0–8,0 mm	12,7 mm
● 15,0	0,5–0,8 mm	max. 35 mm	1,0–8,0 mm	15,0 mm



□ Standard

● Option

CC-15

Dimensions: L 190/W 100/H 30 mm

Display: six-digit LCD (0 to 999 999)

Weight: 0,8 kg

Divisors: 1, 2, 3 to 8

Power supply: rechargeable battery (installed) or mains adapter unit, 230 or 115 VAC

Precision: +/- 1

Counting speed: 100/sec.

Application: lead thickness 0,4 to 1,5 mm, maximum tape width 12 mm, distance between tapes 30 to 105 mm

CB-100 Dimensions: L 190/W 100/H 170 mm

Power supply: 230/115 VAC

Weight: 4 kg

Start and stop: foot switch, two speeds

Important: maximum lead thickness: 0,8 mm; lead material: copper

CB-3000 Processable components: body diameter 2,3–6,5 mm, body length 4–25 mm, maximum overall length 98 mm

CB-109 Component dispenser reels with a maximum width of 80 mm and a maximum diameter of 330 mm

CB-111 Component tape rewinder for reels with a maximum width of 80 mm and a maximum diameter of 330 mm

CB-112 SMD tape rewinder for reels with a maximum width of 36 mm and a maximum diameter of 330 mm

Sales and Service by:

Specifications subject to change