

MSD 1222-55-S / 1222-55 / 1223



TECHNICAL DATA CABINET

External dimensions:	(W x H x D) 840 x 2040 x 900 mm
External dimensions*:	(W x H x D) 1121 x 2040 x 900 mm
Internal dimensions:	(W x H x D) 830 x 1780 x 730 mm
Weight:	1222-55-S: 190 kg / 1222-55: 140 kg
Weight on shelf:	30 kg
Max. loading capacity:	Max. 400 kg
Body:	Steel, dissipative coated ($10^5 - 10^{11} \Omega/\text{sq}$)
Shelves (w x d):	2 pcs short, 735 x 580 mm 2 pcs long, 735 x 740 mm. dissipative coated, in a grid of 20 mm height adjustable.
Volume:	1200 L
Electric supply:	230 V / 50 Hz (120 V / 60 Hz optionally available)
Power consumption:	30 W/h average
Protection class:	Class 1, hard grounded
Humidity level cabinet:	$\leq 0,5\%$ RH, depending on amount of door openings.

*Cabinet with Smart Box 1222-55-S

MSD SERIES

The MSD dry storage cabinet is modular and can be extended by using additional cabinet modules. This allows it to be individually adapted to your needs, and offers additional storage space as space requirements increase. The dimensions of the cabinet are specially designed for the storage of SMD rolls.

5 SERIES DISPLAY

- Full HD capacitive multi-touch panel
- Humidity setpoint, alarm limit and alarm delay
- Temperature setpoint, alarm limit and alarm delay
- Sensor Offset
- Multi level access
- Fixed time- and manual regeneration possible
- Sensor readout history trace
- Newest Totech user interface



- 7 inch display on the top or,
- 10 inch display to the side of the cabinet

STANDARD FEATURES

✓ Rotronic sensor	+/- 0,8 % RH, +/- 0,2°C
✓ Online functionality	Interface and data logging through standard Ethernet interface
✓ ESD Safe design	Norm IEC 61340-5-1, dissipative coated body ($10^5 - 10^{11} \Omega/\text{sq}$) Dissipative glazing (in- and outside $10^5 - 10^{11} \Omega/\text{sq}$)
✓ Lockable doors	2 doors locked with 2 keys
✓ Drying unit	U-5000 Series
✓ Transport	360° castors with brake
✓ Power supply	Power cord 5 meter with IEC plug

BENEFITS

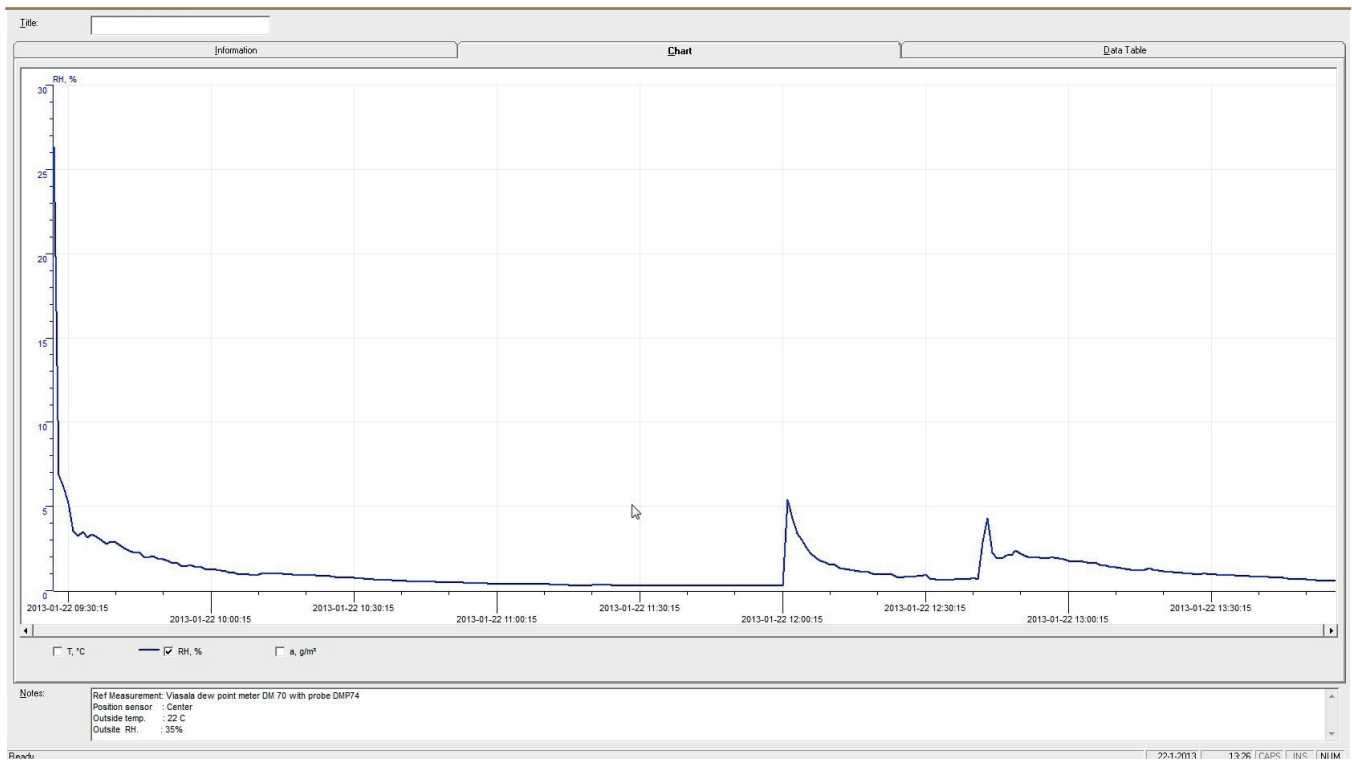
✓ Recovery time after door opening	<15 Min to below 0,5% (by 1 door opening)*
✓ Modular system	Extension by add-on cabinet possible
✓ IPC	According to IPC/JEDEC J- STD 033D & IPC-1601
✓ Maintenance	The drying unit is maintenance free, easy to service

*Depending on the configuration.

TECHNICAL DATA DRY-UNIT U-5000

Dimensions	487 × 487 × 150 mm (w × h × d)
Dehumidifying Temperature	10 - 60° C
Electric supply	230 V / 50 Hz (120V / 60Hz optionally available)
Control	Plug-in unit
Weight	14 kg
Power consumption	46 W/h
Protection class	Class 1, hard grounded
Humidity level cabinet	≤0,1% RH

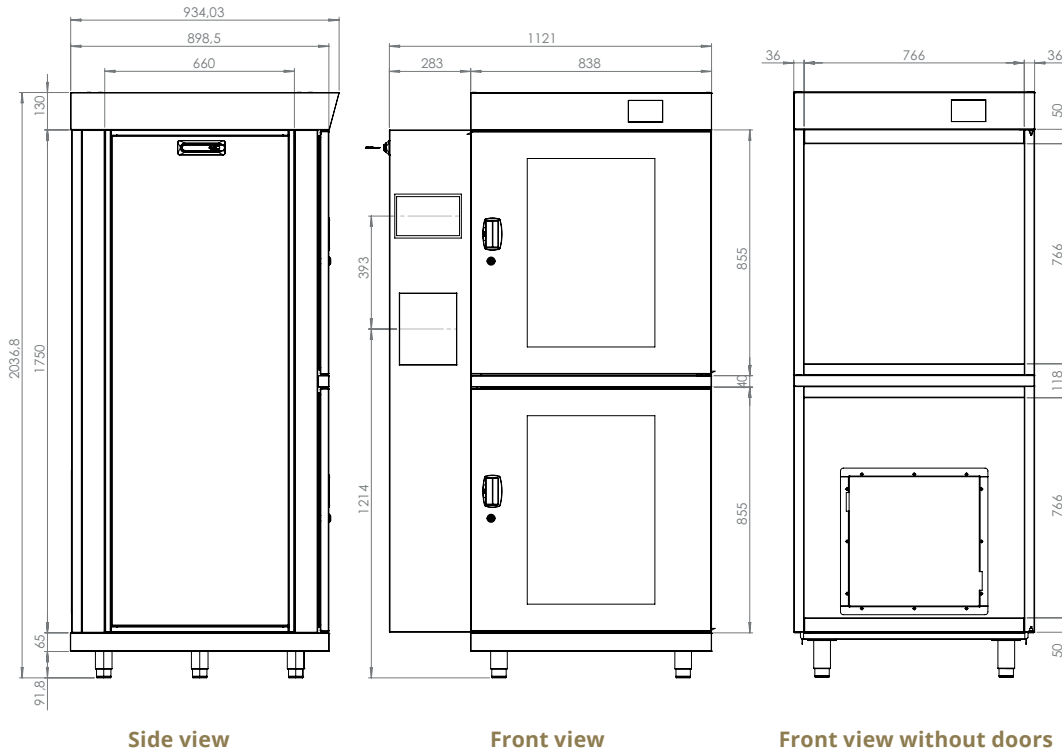
PERFORMANCE TEST



TEST CONDITIONS

Instrument	Vaisala
Type of dew point sensor	Vaisala drycap 180M
Accuracy of dew point sensor	± 0,2° C at + 20° C (+ 68° F)
Location of sensor	In the direct surroundings of the cabinet sensor
Ambient conditions	Hum. 50 ± 5% rH, 22°C ± 2°C, Pressure 994 ± 20 hPa.
Door openings	2 door openings, 15 sec. (average RH 0,70%)

TECHNICAL DRAWINGS



Dimensions in mm

SHELVES

NUMBER OF SHELVES BOTTOM SECTION

	2	3	4	5	6	7	8
Shelves are adjustable every (mm)	20 mm	20 mm	20 mm	20 mm	20 mm	20 mm	20 mm
Remaining space between top shelf and middle beam	310 mm	75 mm	115 mm	75 mm	115 mm	115 mm	115 mm
Distance between shelves if equally divided	375 mm	290 mm	170 mm	130 mm	90 mm	65 mm	50 mm

NUMBER OF SHELVES TOP SECTION

	2	3	4	5	6	7	8
Remaining space between top shelf and top cabinet	310 mm	75 mm	115 mm	75 mm	115 mm	115 mm	115 mm
Distance between shelves if equally divided	375 mm	290 mm	170 mm	130 mm	90 mm	65 mm	50 mm

Measurements can slightly deviate.

MSD 1223*

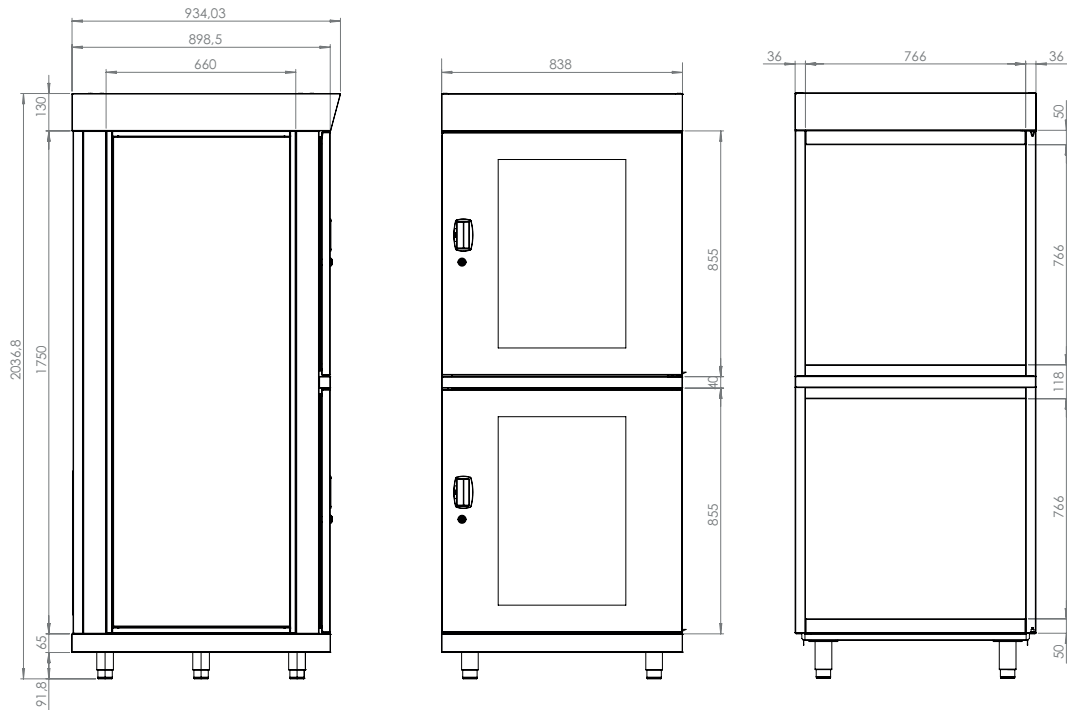


TECHNICAL DATA CABINET

External dimensions:	(W x H x D) 840 x 2040 x 900 mm
Internal dimensions:	(W x H x D) 830 x 1780 x 850 mm
Weight:	125 kg
Weight on shelf:	30 kg
Max. loading capacity:	Max. 400 kg
Body:	Steel, dissipative coated ($10^5 - 10^{11} \Omega/\text{sq}$)
Shelves (w x d):	4 pcs long, 735 x 740 mm. dissipative coated, in a grid of 20 mm height adjustable.
Volume:	1255 L
Protection class:	Class 1, hard grounded
Humidity level cabinet:	$\leq 0,5\%$ RH, depending on amount of door openings.

*Only in connection with MSD 1222-55 and MSD 122-55-S

TECHNICAL DRAWINGS



Side view

Front view

Front view without doors

Dimensions in mm

SHELVES

NUMBER OF SHELVES BOTTOM SECTION

	2	3	4	5	6	7	8
Shelves are adjustable every (mm)	20 mm	20 mm	20 mm	20 mm	20 mm	20 mm	20 mm
Remaining space between top shelf and middle beam	310 mm	75 mm	115 mm	75 mm	115 mm	115 mm	115 mm
Distance between shelves if equally divided	375 mm	290 mm	170 mm	130 mm	90 mm	65 mm	50 mm

NUMBER OF SHELVES TOP SECTION

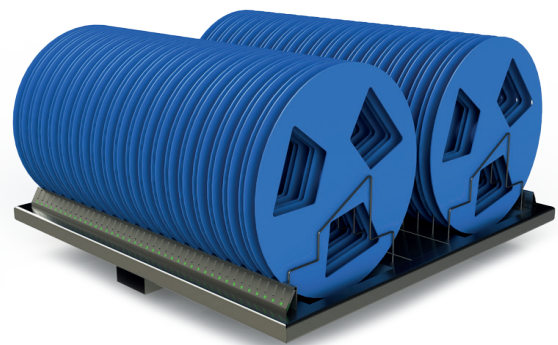
	2	3	4	5	6	7	8
Remaining space between top shelf and top cabinet	310 mm	75 mm	115 mm	75 mm	115 mm	115 mm	115 mm
Distance between shelves if equally divided	375 mm	290 mm	170 mm	130 mm	90 mm	65 mm	50 mm

Measurements can slightly deviate.

ITEM	NUMBER
Heater SH-1200	21001510
U-5003 slave for MSD 1223	47005055
Extendable sliding shelves MSD 1222 / 1223	
Short shelf, dissipative coated, up to 30 kg	20017401
Long shelf, dissipative coated, up to 30 kg	20011740
Short shelf, dissipative coated, up to 50 kg	20011746
Long shelf, dissipative coated, up to 50 kg	20011747
Short shelf, Stainless steel, up to 30 kg	20011743
Long shelf, Stainless steel, up to 30 kg	20011742
Fixed coated shelves	
Short shelf, dissipative coated, up to 75 Kg	20011759
Long shelf, dissipative coated, up to 75 Kg	20011758
SMD-Reel rack, ESD-safe coated	20014005
530 x 265 mm with 18 Reel supports	
SMD-Reel rack, ESD-safe coated	20014006
700 x 265 mm with 26 Reel supports	
Reel support	20014200
Additional reel support for the SMD-Reel rack	
Humidity alarm signal lamp	20016030
N2 auto flow - software controlled	80008001
N2 flow system	20010020
Shelf divider, ESD-Safe coated	
Short: Lenght = 60 cm, Width = 12 cm	20011011
Long: Lenght = 74,5 cm, Width = 12 cm	20011010
HEPA H13 filter kit, outgoing flow	22613022
X Feeder system Siemens/ASM	46204030
Incl. reel rack 535mm	
S Feeder system Siemens/ASM	46204031
Incl. reel rack 535mm	
Totech Monitor Software	47000583
Realtime cabinet monitoring with alarm function	

ITEM	NUMBER
MSL Software	20010036
Software solution for monitoring 1000 components (standard for MSD 1222-55-S)	
MSL Software upgrade	20010037
Upgrade to monitor an extra cabinet with 1000 components	
Smart reel rack double (180-360 mm) MSD Long	20014006S
Only in combination with MSD 1222-55-S	
Smart reel rack double (180-360 mm) MSD Short	20014006SS
Only in combination with MSD 1222-55-S	
Pick by Light license	21000039
Only in combination with MSD 1222-55-S	
Intergrated PC with MSL Software installed	32117165
Only in combination with MSD 1222-55-S	

Smart Reel Rack with Pick by Light integration



HEATER SH-1200

Voltage	230 VAC / 50 Hz (120 VAC / 60 Hz optionally available)
Power	1650 W
Temperature sensor	Hygroclip HC2A-s
Thermal protection	90 °C
Temperature range	20 - 40 °C
Air flow	550 m ³ /h