



ESDA-402-00



Our ESDA Series is suitable for storage in a controlled atmosphere. This can be achieved with the use of a nitrogen unit and/or installation of our state-of-the-art U-4001 Dry Unit. The cabinet does not come with a control panel.

Proven in use around the world, the unique design of the ESDA-402 with optional U-4001 Drying Unit is highly energy efficient, representing a significant cost advantage for our customers.

The ESDA series is ESD safe. The surfaces of the cabinet are not chargeable. Acrylic body 10^{-7} Ω /sq.



0 series display

Battery operated humidity measurement device (standard in cabinet).



Features

Hygrometer
Lockable door
ESD safe design

Shelves

Nitrogen Unit option
Drying Unit option
Power supply

Hygrometer with alarm function, accuracy +/- 3%
Door locked with key
Norm (IEC 61340-5-1) The surfaces of the cabinet are ESD safe.
Acrylic body $10^{-7} \Omega/\text{sq}$.
5 height adjustable chrome plated steel shelves connected with conductive frame $10^3 \Omega/\text{sq}$.
Pre mounted holes for installing N² Flow system.
Pre mounted hole for installing Drying Unit.
5 meter cable with IEC plug (when Dry Unit is installed)

Benefits

Options available
Highly energy sufficient
Recovery time after door opening
Datalogging
Clear Polycarbonate material

Dry Unit U-4001 / N2 (Auto) Flow / SMD reel racks, etc.
Average power consumption 35 W/h (when dry unit is installed)
± 15 min (when dry unit is installed)
With Rotronic datalogger
Transparent and easy to see contents



Technical Data Cabinet with U-4001 Drying Unit

External dimensions:	(W x H x D) 574 x 1485(1690) x 517 mm
Internal dimensions:	(W x H x D) 565 x 1480 x 480 mm
Weight:	59 kg
Max weight on shelf:	30 kg
Max loading capacity:	100 kg
Frame:	Aluminium, coated
Body:	ESD-Polycarbonate $10^7 \Omega/\text{sq}$
Shelves (W x D):	4 long adjustable shelves 460 x 490 mm, 1 short adjustable shelf 460 x 380 mm
Volume:	390 L (due to volume of Drying Unit)
Voltage:	230 V, 50 Hz 120 V, 60 Hz (optional)
Power consumption:	35 W/h
Grounding:	Class 1, hard grounded
RH%:	Drying 1 - 2%*

*(depending on number of door openings)

Technical Data N² (Auto) Flow

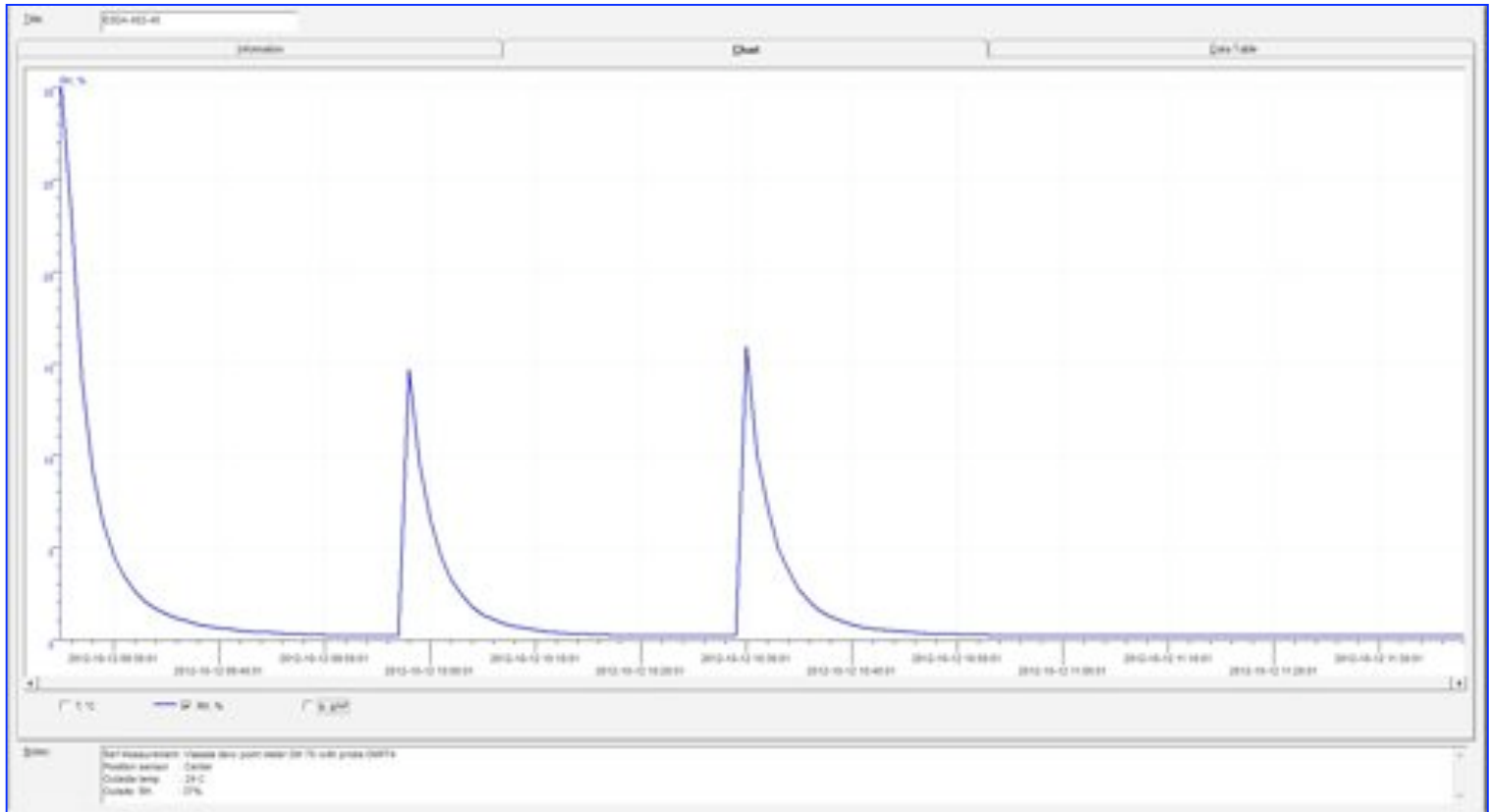
N ² flow:	10 – 100 L/min	
N ² autoflow:	N ² connection pressure:	1 – 6 bar
	N ² Standby- quantity:	0 – 25 L/min
	N ² (Purge):	0 – 100 L/min
	(Purge-Time):	0 – 99 min

Technical Data Cabinet without Drying Unit

External dimensions:	(W x H x D) 574 x 1485 (1690) x 517 mm
Internal dimensions:	(W x H x D) 565 x 1480 x 480 mm
Weight:	52 kg
Max weight on shelf:	30 kg
Max loading capacity:	100 kg
Frame:	Aluminium, coated $10^7 \Omega/\text{sq}$
Body:	ESD-Polycarbonate
Shelves (W x D):	5 long adjustable shelves 460 x 490 mm
Volume:	400 L



Performance test



Test conditions

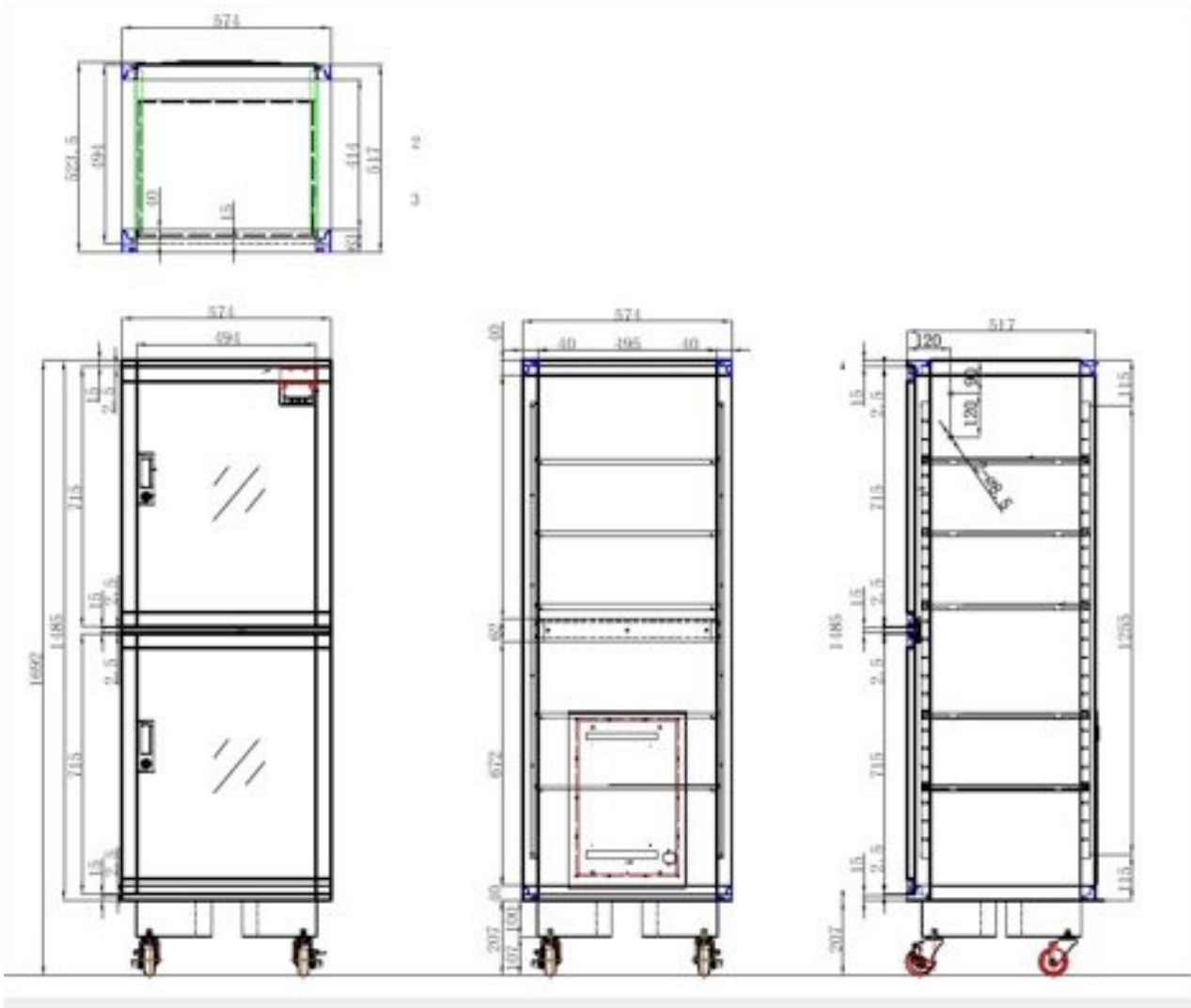


Instrument:	Vaisala.
Type of dew point sensor:	Vaisala drycap 180M
Accuracy of dew point sensor:	$\pm 0.2^{\circ}\text{C}$ at $+20^{\circ}\text{C}$ ($+68^{\circ}\text{F}$)
Location of sensor:	In the direct surrounding of cabinet sensor
Ambient conditions:	Humidity $50 \pm 5\%$ RH, $25^{\circ} \pm 2^{\circ}\text{C}$, Pressure $994 \pm 20\text{hPa}$.
Door openings:	2 door openings, 15 sec. (average RH 0.70%)



Technical Dimensions

ESDA-402-00/40



Dimensions in mm

Maximum number of shelves in the cabinet (with Dry Unit)	17 long shelves, 7 short shelves
Maximum number of shelves in the cabinet (without Dry Unit)	24 long shelves
Minimum space between the shelves	35 mm



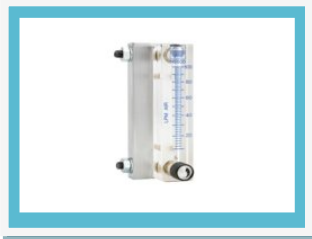
Options



N2 Auto Flow System,

The Auto Flow System is developed to use in combination with a Totech drying cabinet. The device is used for the quick removal of moisture in the cabinet using nitrogen (N²). A second flow meter has been installed to achieve the drying process automatically by using a timer that is triggered after the door has been opened.

Item number 20000021.



N2 Flow System 10-100

The N2 Flow System is developed for use in combination with a Totech drying cabinet. The apparatus is used for the quick removal of moisture in the cabinet after the doors have been opened. The drying process is achieved by using nitrogen (N²).

Item number 20010020



SMD reel holders

460 mm length

Item number 20014000

SMD reel supports

Reel support for 2001400

Item number 20014200



Rotronic datalogger set

Includes HW4-E-V3 Software and Cable AC3006

Item number 47000580



Humidity calibrator Hygropalm 22

Precision measuring device for calibrating sensors

Set includes Hygroclip sensor, case and cable:

Item number 20001019

Hygropalm only:

Item number 20001016

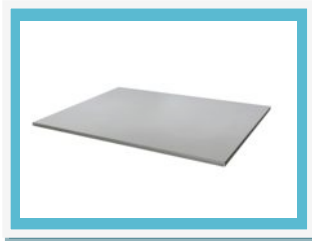


Options



Shelf ESDA-402 - short incl. brackets

Item number 30010100



Shelf ESDA-402 - long incl. brackets

Item number 20100021



U-4001 Drying Unit

For rapidly decreasing the humidity level (no control function).

Voltage level: 230 V/50 Hz. (optional 120 V/60 Hz)

Power consumption: 35 W/h

Dimensions: W x L X D = 260 mm x 380 mm x 100 mm

Weight: 8.1 kg.

Item number 230V/50Hz 30021129

Item number 120V/60Hz 30021131

Item number: 93009422 / version 06-02

