

HELLAS

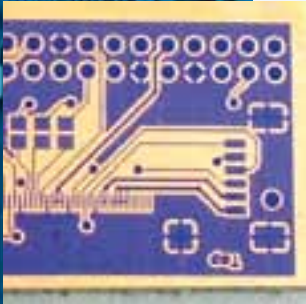
VACUUM EXPOSURE UNIT

High precision vacuum exposure unit especially designed for double sided contact exposure of presensitized base materials such as tampon printing clichés, PCBs, front-panels, daylight films and other UV sensitive coatings.

Features

- 2 x 6 superactinic UV-tubes, each 20 W
- Special reflectors for minimum undercut
- Analogue light emission display
- Lower exposure surface from 8 mm special glass

- Upper exposure area from structured mylar foil in a sturdy frame
- Working area 570 x 300 mm
- Suitable for fine-line PCBs
- Maintenance free vacuum (80%) with gauge display, 1380 l/hour continuous rating
- Digital timer 1 second - 9 min 59 sec. with count-down, auto-reset and beeper
- Built in cooling fan allows long time exposure or baking processes
- Separate choice of upper/low exposure possible
- Sturdy steel housing



50µm Leiterbahn und Abstand



HELLAS

	Hellas Z	Hellas E	Hellas XL	Hellas XL E
Dimensions (LxWxH):	620 x 650 x 240 mm	620 x 650 x 240 mm	680 x 650 x 240 mm	680 x 650 x 240 mm
Weight:	approx. 40 kg	approx. 40 kg	approx. 45 kg	approx. 45 kg
Electrical Connection:	220 V~, 50 Hz, approx. 800 W	220 V~, 50 Hz, approx. 800 W	220 V~, 50 Hz, approx. 800 W	220 V~, 50 Hz, approx. 800 W
Exposure area:	approx. 570x300 mm	approx. 570x300 mm	approx. 365x575 mm	approx. 365x575 mm
Number of Tubes	2 x 6	1 x 6	2 x 7	1 x 7
Separate switch on and shutdown of the exposure flat	Yes	No	Yes	No
Permant Exposure	Yes	Yes	Yes	Yes
Amperemeter	Yes	No	Yes	No
Cover Switch	Option	Option	Option	Option
Digital timer	Yes	Yes	Yes	Yes
Cross-flow fan	Yes	No	Yes	No
Milky Foil for Clichee	Option	Option	Option	Option