

# XSDB 1412-55-S / XSDB 1412-55



### TECHNICAL DATA CABINET

External dimensions:	(W x H x D) 1432 x 1930* (2110) x 808 mm
External dimensions**:	(W x H x D) 1728 x 1930 x 808 mm
Internal dimensions:	(W x H x D) 1311 x 1504 x 685 mm
Weight:	XSDB 1412-55-S: 280 kg / XSDB 1412-55: 230 kg
Weight on shelf:	50 kg
Max. loading capacity:	Max. 300 kg
Body:	Steel, conductive coated 10 <sup>5</sup> -10 <sup>11</sup> Ω/sq
Sliding shelves (w x d):	10 pcs, 535 x 650 mm adjustable (max. 30 pcs) Chromesteel in grid of 50 mm height adjustable.
Volume:	1390 L
Electric supply:	230 V / 50 Hz (120 V / 60 Hz optionally available)
Power consumption:	230 W/h average (40°C)
Protection class:	Class 1, hard grounded
Humidity level cabinet:	≤0,5% RH, depending on amount of door openings.
Temperature accuracy:	60°C, +/- 2°C

\* Height incl. castors. \*\* Cabinets with Smart box 1412-55-S

### XSDB SERIES

The stainless steel cabinets of the XSDB series are characterized by their powerful drying. The cabinets are equipped with a 40°C heating and retractable shelves. Thanks to the double-walled stainless steel housing and with a 60 mm insulation, a constant temperature is maintained with the lowest energy input. A centrifugal fan supports the drying process by ensuring an even distribution of the dried and heated air.

### SERIE-5 DISPLAY

- 10 inch full HD capacitive multi-touch panel
- Humidity setpoint, alarm limit and alarm delay
- Temperature setpoint, alarm limit and alarm delay
- Sensor Offset
- Multi level access
- Fixed time- and manual regeneration possible
- Sensor readout history trace
- Password Protection
- Newest Totech user interface



### STANDARD FEATURES

✓ Rotronic sensor	+/- 0,8% RH, +/- 0,2°C
✓ Online functionality	Interface and data logging through standard Ethernet interface.
✓ ESD Safe design	Norm IEC 61340-5-1, Steel, conductive coated 10 <sup>5</sup> -10 <sup>11</sup> Ω/sq Dissipative glazing (in- and outside 10 <sup>5</sup> - 10 <sup>11</sup> Ω/sq)
✓ Lockable doors	Doors can be locked and unlocked separately through display
✓ Drying unit	U-5000 Series
✓ Shelves	In height adjustable sliding shelves (10 pcs)
✓ Power supply	Power cord 5 meter with IEC plug
✓ Temperature	Adjustable setpoint, up to 60°C (optional) heating to speed up the drying process
✓ Lighting	LED-Interior lights (optional)

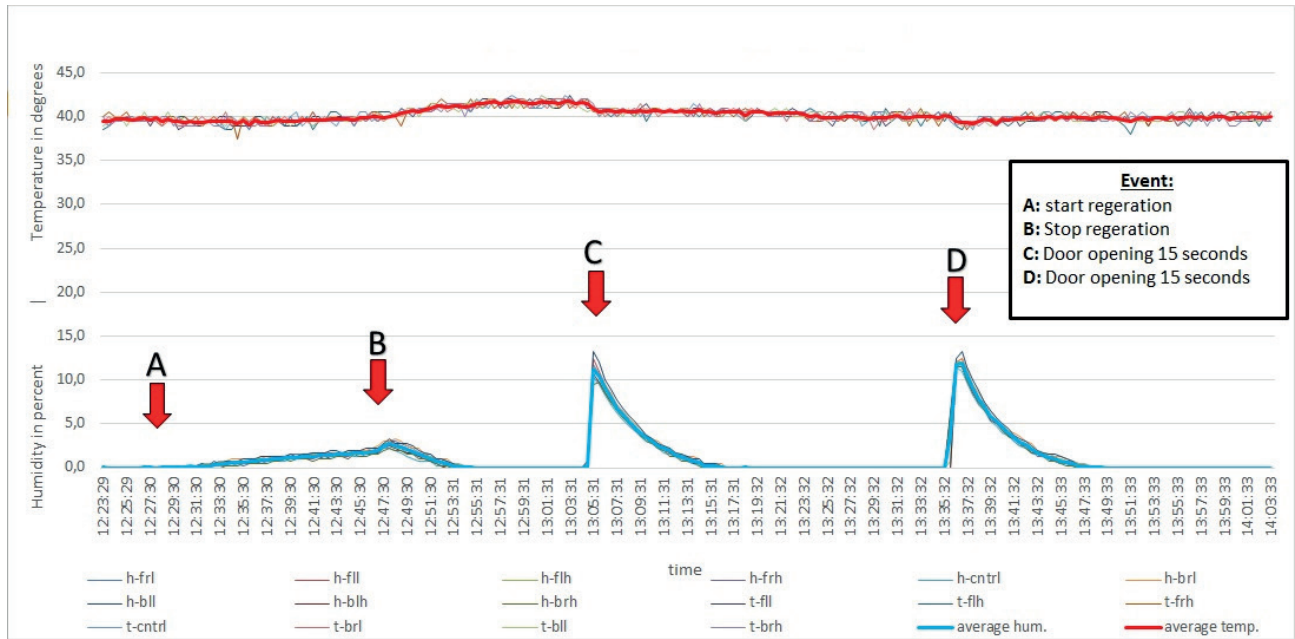
### BENEFITS

✓ Recovery time after door opening	<10 Min to below 0,5% (by 1 door opening)
✓ IPC	According to IPC/JEDEC J- STD 033D & IPC-1601
✓ Maintenance	The drying unit is maintenance free, easy to service

**TECHNICAL DATA DRY-UNIT U-5000**

Dimensions	487 × 487 × 150 mm (w × h × d)
Dehumidifying Temperature	10 - 60° C
Electric supply	230 V / 50 Hz (120V / 60Hz optionally available)
Control	Plug-in unit
Weight	14 kg
Power consumption	46 W/h
Protection class	Class 1, hard grounded
Humidity level cabinet	≤0,1% RH

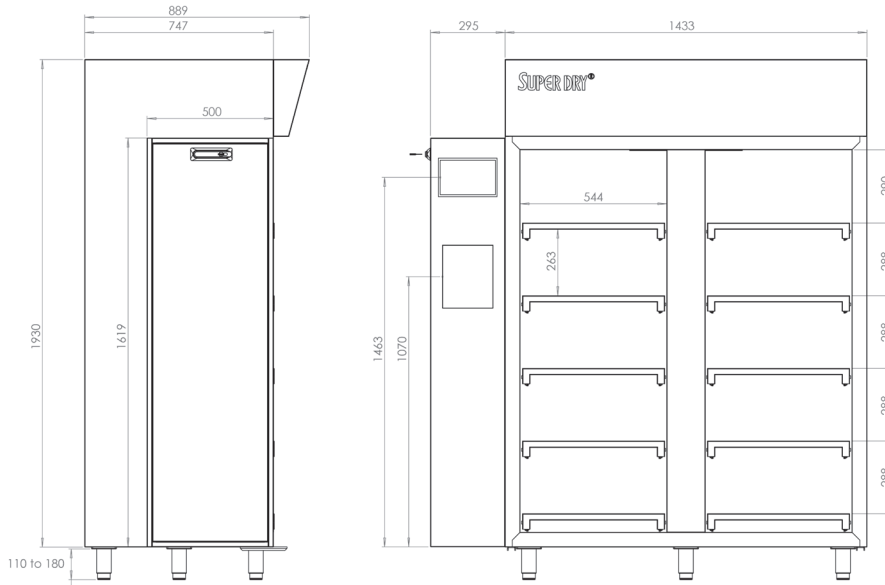
**PERFORMANCE TEST**



**TEST CONDITIONS**

Type of dew point sensor	9 x Hygroclip HC2A-S
Accuracy of dew point sensor	± 0,3 ° C at + 20 ° C (+ 68 ° F)
Location of sensors	Every corner + center
Ambient conditions	Hum. 50 ± 5% rF, 22 ° C ± 2 ° C, Pressure 994 ± 20 hPa
Door openings	2 door openings, 15 sec.
Door openings	2 door openings, 15 sec. (average RH 0,70%)

TECHNICAL DRAWINGS



Side view

Front view

Dimensions in mm

SHELVES

NUMBER OF SHELVES  
(47000198)

	5	6	7	8	9	10	11	12	13	14	15
Distance between shelves if equally divided beam	280	230	180	130	130	80	80	80	80	80	80
Remaining space between top shelf and top cabinet	330	285	330	140	330	185	430	380	330	235	140

NUMBER OF SHELVES  
(48000052)

	5	6	7	8	9	10	11	12	13	14	15
Distance between shelves if equally divided beam	260	210	165	165	115	115	70	70	70	70	70
Remaining space between top shelf and middle	235	190	235	40	235	90	430	330	235	140	70

NUMBER OF DRAWERS\*

	1	2	3	4	5	6	7	8	9	10	11	12	13	14	15
Remaining space in mm	1336	1270	1174	1078	982	886	790	694	598	502	406	310	214	118	22

\* Optional. Dimensions in mm. Measurements can slightly deviate.

ITEM	NUMBER
<b>Additional shelf</b> Chromesteel shelf without roller, XSDB 1412	47000198
<b>Extendable sliding shelf</b> With bearings XSDB 1412	48000052
<b>SMD-Reel rack ESD-safe coated</b> 530 x 265 mm with 18 reel supports	20014005
<b>Reel support</b> Additional reel support for the SMD-Reel rack	20014200
<b>Alarm signal light tower</b>	20016030
<b>Upgrade for 60°C heating</b>	21001505
<b>N2 auto flow - software controlled</b>	80008001
<b>Software upgrade Reset-Timer</b> Software with reset timers to use for 10 individual batches	21001027
<b>ESD-safe castor set</b>	20017060
<b>Honeycomb system</b> Storage system for IC tubes	20050100
<b>XSDB stainless steel drawer</b>	47000228
<b>Honeycomb system drawer divider</b> 5 long and 5 short	47000129
<b>Door release pedal</b>	47000145
<b>X Feeder system Siemens/ASM</b> Incl. reel rack 535mm	46204004
<b>S Feeder system Siemens/ASM</b> Incl. reel rack 535mm	46204009

ITEM	NUMBER
<b>Totech Monitor Software</b> Realtime cabinet monitoring with alarm function	47000583
<b>MSL Software</b> Software solution for monitoring 1000 components (included in the XSD 1412-55-S)	20010036
<b>MSL Software upgrade</b> Upgrade to monitor an extra cabinet with 1000 components	20010037
<b>Smart reel rack double (180 mm)</b> Only in combination with XSD(B) 1412-55-S	20014005SD
<b>Smart reel rack (330 -360 mm)</b> Only in combination with XSD(B) 1412-55-S	20014005S
<b>Pick by Light license</b> Only in combination with XSD 1412-55-S	21000039
<b>Intergrated PC with MSL Software installed</b> Only in combination with XSD 1412-55-S	32117165

**Smart Reel Rack with Pick by Light integration**

